



## “SR”型单动气动执行器（不锈钢 F316 锻造）

Spring return pneumatic actuator “SR” type F316 FROM SOLID BAR



### 技术特点

扭矩：360Nm—960Nm

安装法兰符合 DIN/ISO 5211 DIN 3337; F10 - F12 - F14 - F16 标准

旋转角度 90°

扭矩：复位扭矩取决于弹簧作用，与供气压力无关。可提供 4 种不同规格弹簧尺寸（见表—气动执行器 SR 总表）。

代码字母 SR 后的数字表示在 5.6bar 下的扭矩大小。

从 SR30 起可直接与 NAMUR 标准的电磁阀连接。

SR15 可与 NAMUR 板连接。

符合 ATEX 指令 94/9/EC，ATEX 规格请在代码末尾添加 YX。

### Technical features

Torque from 360 Nm to 960 Nm.

Mounting flange according to DIN/ISO 5211 DIN 3337; F10 - F12 - F14 - F16

VDI/VDE 3845 connection for accessories.

Rotation angle 90°

Torque: the return torque depends on spring action only notwithstanding the air supply. The spring is provided in four different sizes (see table - general catalogue pneumatic actuator SR). The code numbers after the letters SR, always correspond to the breakaway torque in Nm by 5,6 bar air supply. The actuator automatic closing takes place in clockwise direction by means of its springs.

Sizes from SR 30 direct connection with NAMUR solenoid valve.

Size SR15 can be provided with NAMUR plate on request

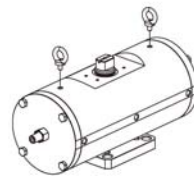
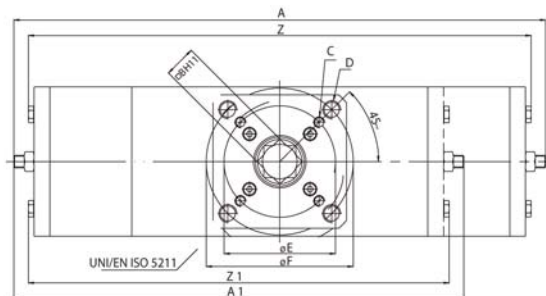
ATEX version in conformity with directive 94/9/EC. Please add YX at the end of the code for ATEX version.

### 工作条件

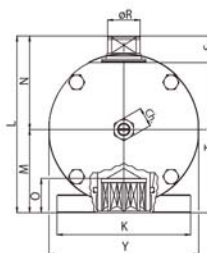
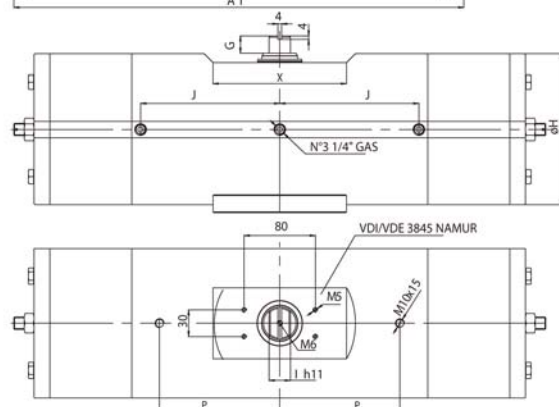
温度：-20°C ~ +80°C。

气源压力：5.6bar；最大 8.4bar。

工作介质：在润滑空气情况下，不得使用洗涤剂油或与 NBR 相溶的润滑油。



专为执行器提供 2 个 M10 的螺栓吊点  
For the lifting use n° 2 eyebolts M10  
Lifting point are designed for actuator only



尺寸表

订货号		SR0360416S	SR0480416S	SR0720424S	SR0720416S	SR0960416S
密封备件		KGXI0023	KGXI0024	KGXI0025	KGXI0025	KGXI0026
<b>规格</b>		<b>SR0360 F10 - F12</b>	<b>SR0480 F12/F16</b>	<b>SR0720 F12</b>	<b>SR0720 F14</b>	<b>SR0960 F12/F16</b>
A	mm	565.5	598	736.8	736.8	769.6
A1(2.8 Bar)	mm	483.5	506	630.8	630.8	645
B	mm	27	36	36	36	46
C x 深	mm	M10x11.5	M12x20	M12x18	M16x18	M12x20
D x 深	mm	M12x11.5	M20x20	-	-	M20x20
E	mm	102	125	125	140	125
F	mm	125	165	-	-	165
G	mm	19.5	19.5	19.5	19.5	18.5
H	mm	156	169	188	188	211
I	mm	22	24	27	27	32
J	mm	138.5	156.3	179.5	179.5	192
K	mm	115	150	130	130	150
L	mm	178	198	216	216	237.7
M	mm	78.5	93.5	101.5	101.5	114.7
N	mm	99.5	104.5	114.5	114.5	123
O	mm	29.5	38.5	38.5	38.5	48.5
P	mm	116	135	160	160	160
Q	mm	-	-	-	-	-
Q2	mm	-	-	-	-	-
R	mm	31.8	36.5	41	41	46
S	mm	30	30	30	30	30
S2	mm	-	-	-	-	-
T	mm	148	168	186	186	207.7
T2	mm	-	-	-	-	-
X	mm	150	150	150	150	150
Y	mm	155	168	187	187	209
Z	mm	525.8	565	685	685	718.4
Z1 (2.8Bar)	mm	435.8	473	559.4	559.4	593.8
Ch	mm	22	22	24	24	24
Ch1 (2.8Bar)	mm	24	24	30	30	30
重量 (Kg)		45.5	60	82.5	82.5	112
重量 (2.8 Bar) (Kg)		37.5	51	77	77	96
耗气量 (dm <sup>3</sup> /cycle)		2.00	2.8	4.20	4.20	5.9